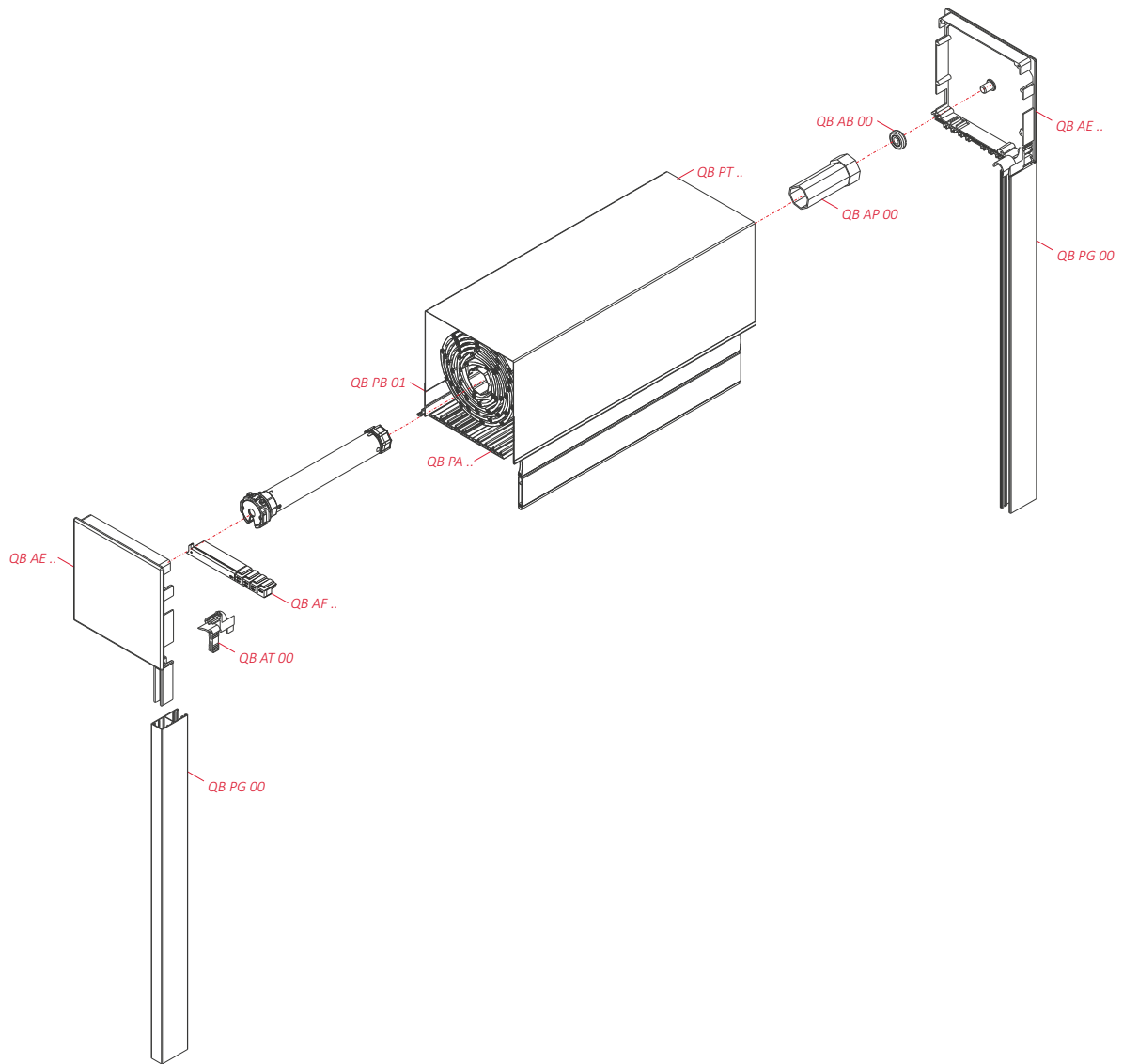


**QuadBox**  
hybrid

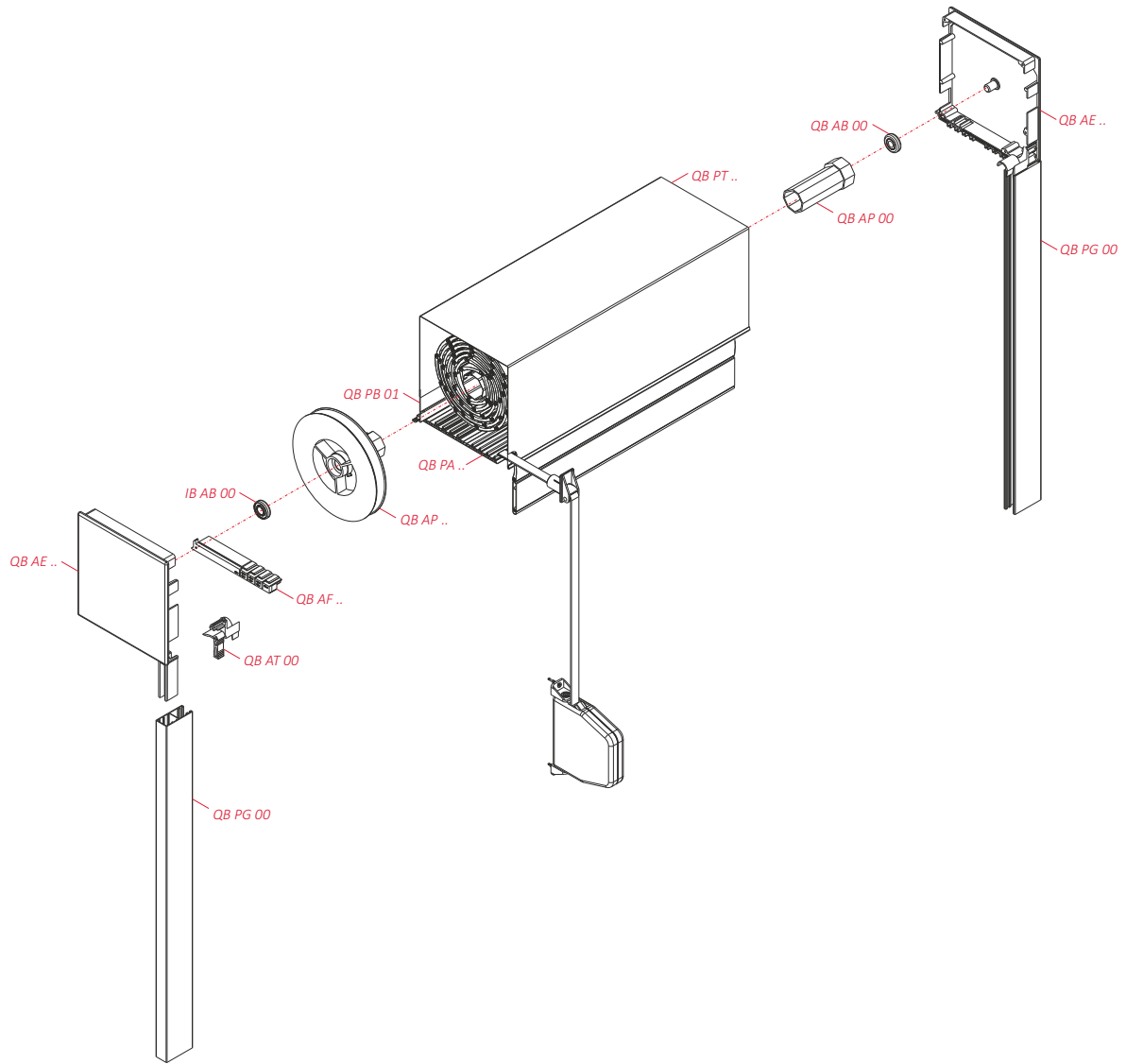


DESIGN	04
BOX VARIANTS	06
LENGTH OF CUTTING ELEMENTS	11
CONSTRUCTION VARIANTS	12
STAGES OF PRODUCTION AND ASSEMBLY	13

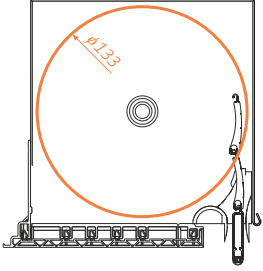
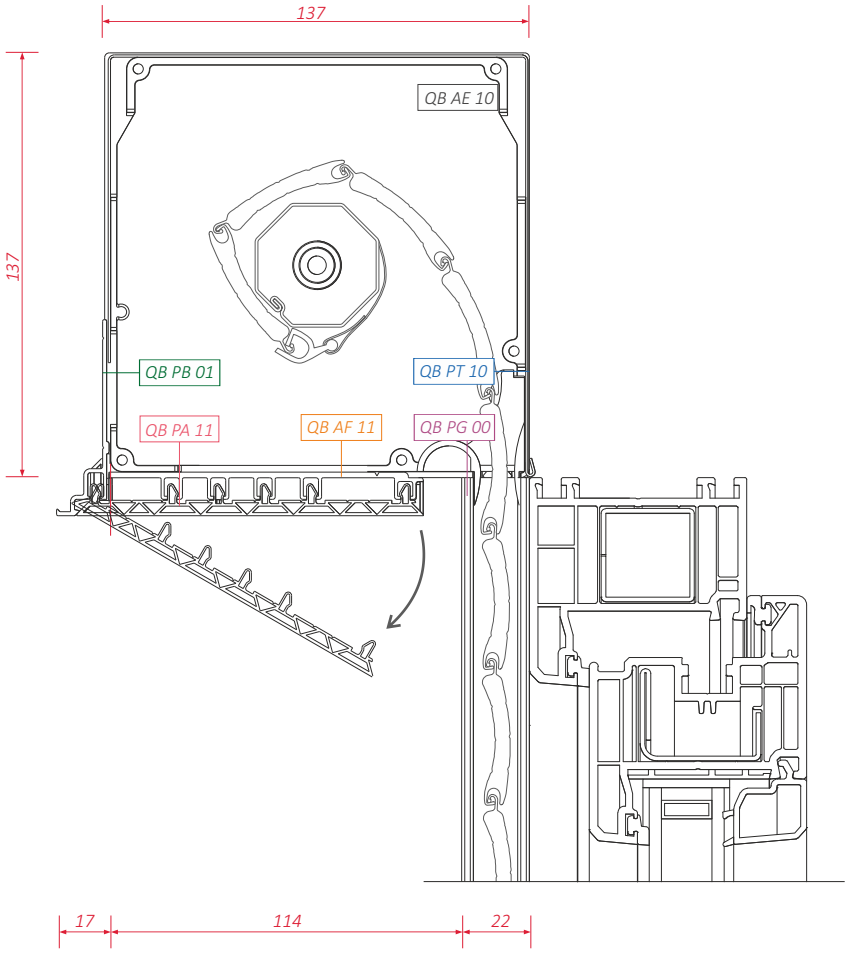
QBR hybrid (electric control)



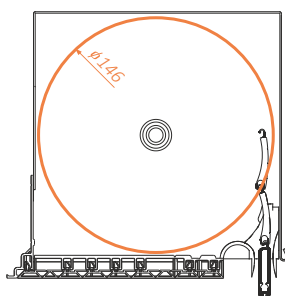
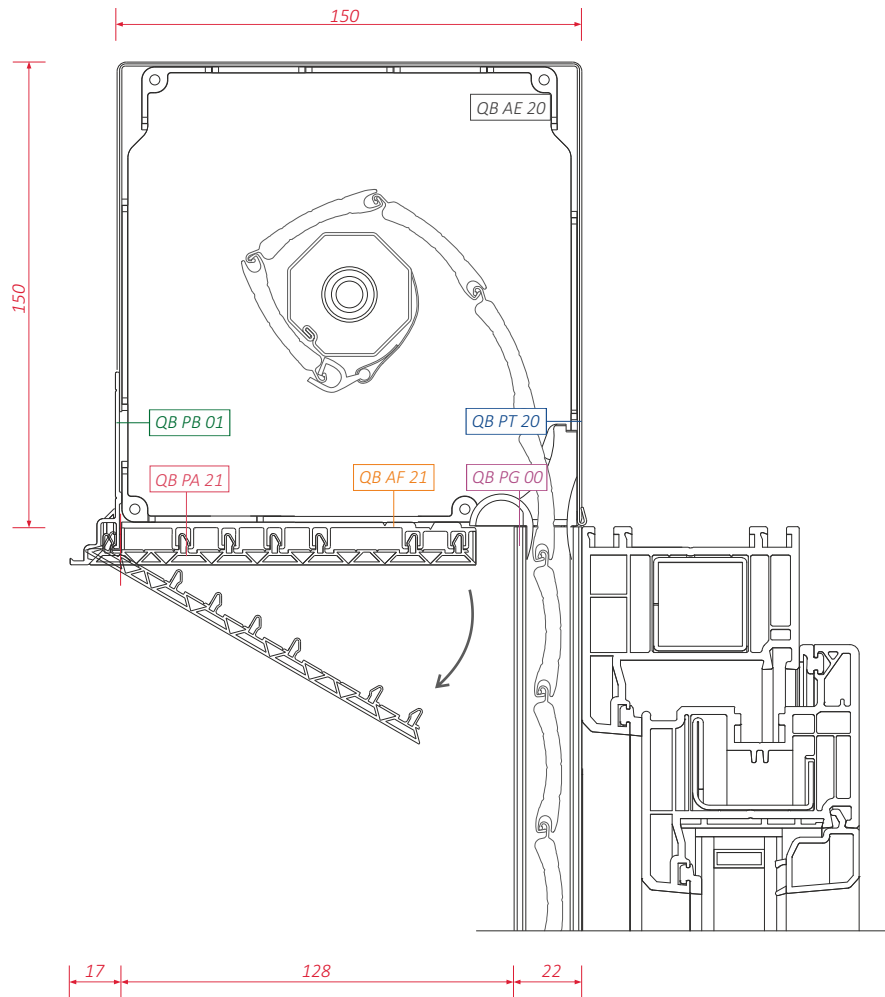
QBR hybrid (manual control)



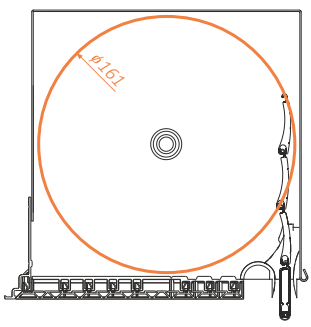
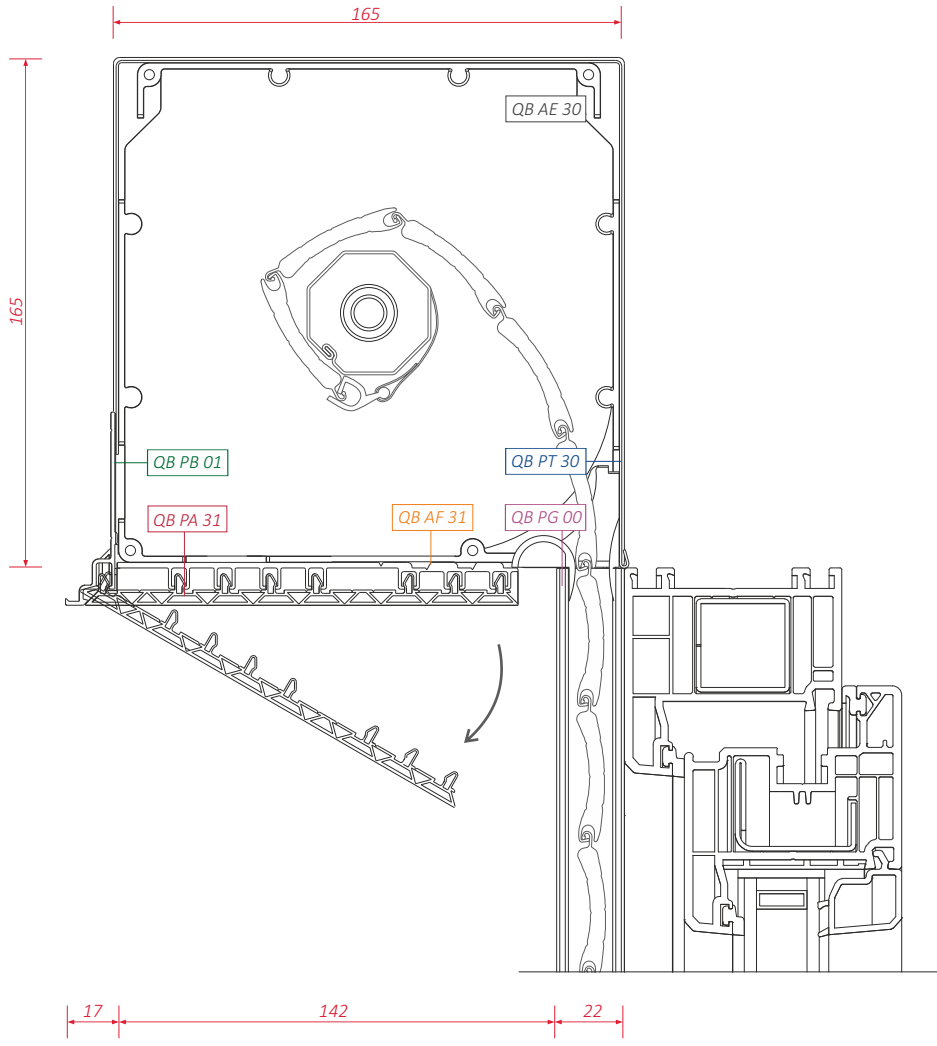
QBR hybrid 137x137



# QBR hybrid 150x150

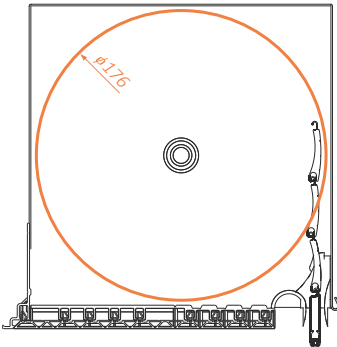
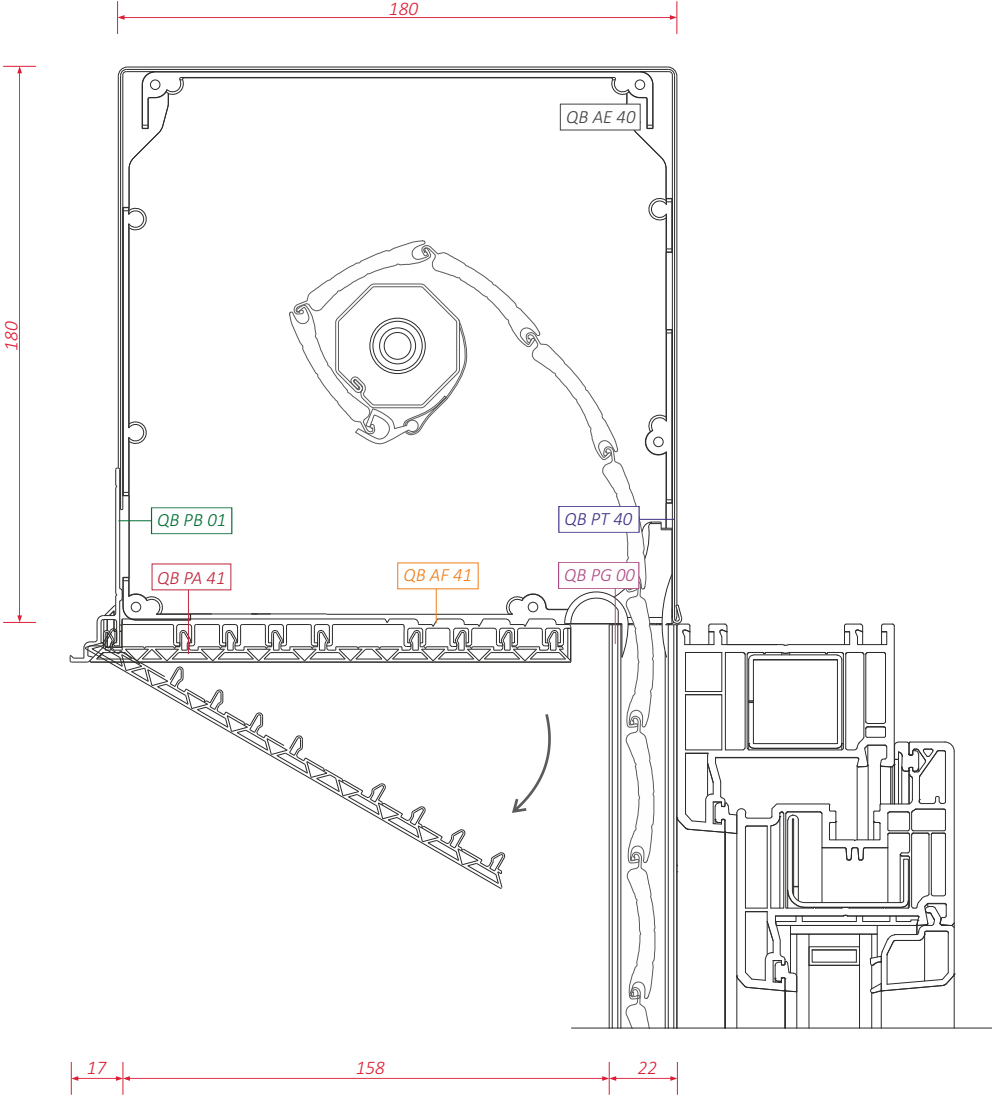


QBR hybrid 165x165

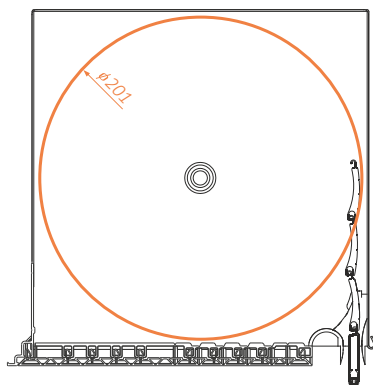
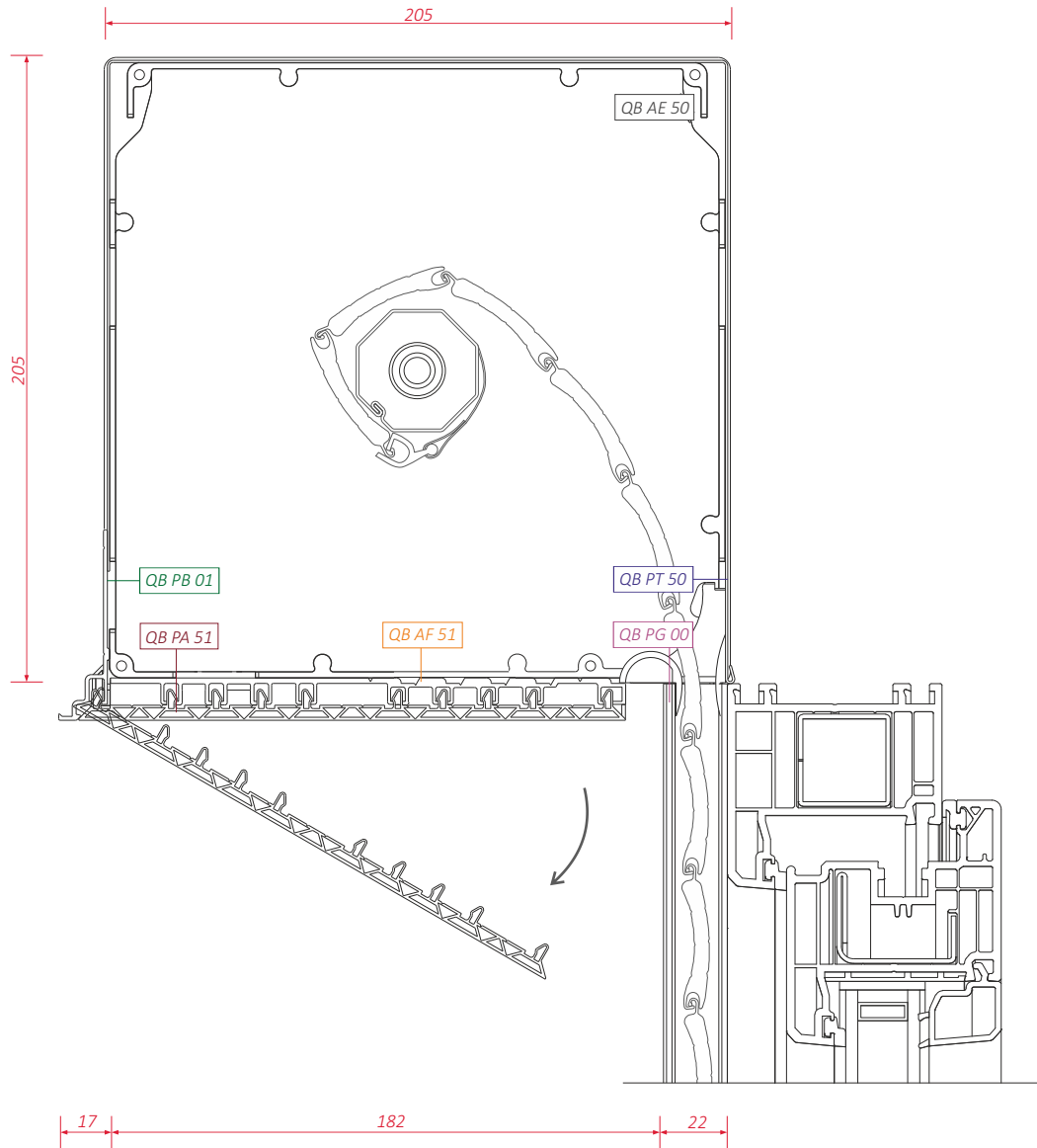




QBR hybrid 180x180



# QBR hybrid 205x205



---

## length of cutting elements (box profiles)

PT 10, PT 20, PT 30, PT 40, PT 50, PB 01 should be cut according to the formula:

$B_w$  (window width) - 10 mm

PA 11, PA 12, PA 21, PA 31, PA 41, PA 51, PA 52 należy ciąć według wzoru:

profile length =  $B_w - 31$  mm

**WARNING!**

Cutting tolerance +/- 1 mm

---

## length of cutting elements (guide channels)

PG 00

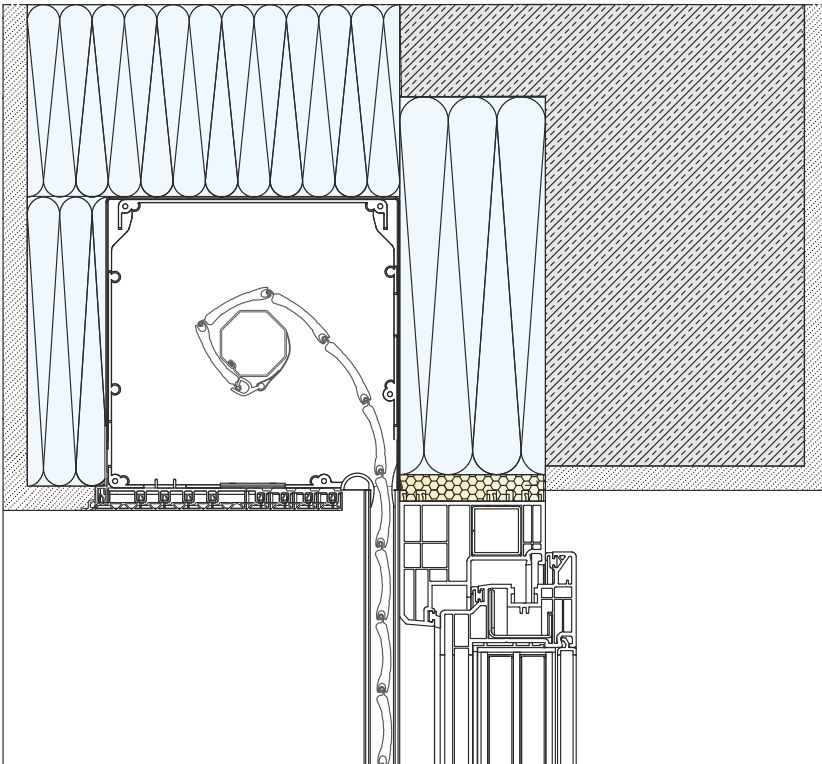
Guide channel height =  $H_w$  (window height)

**WARNING!**

Cutting tolerance +/- 1 mm

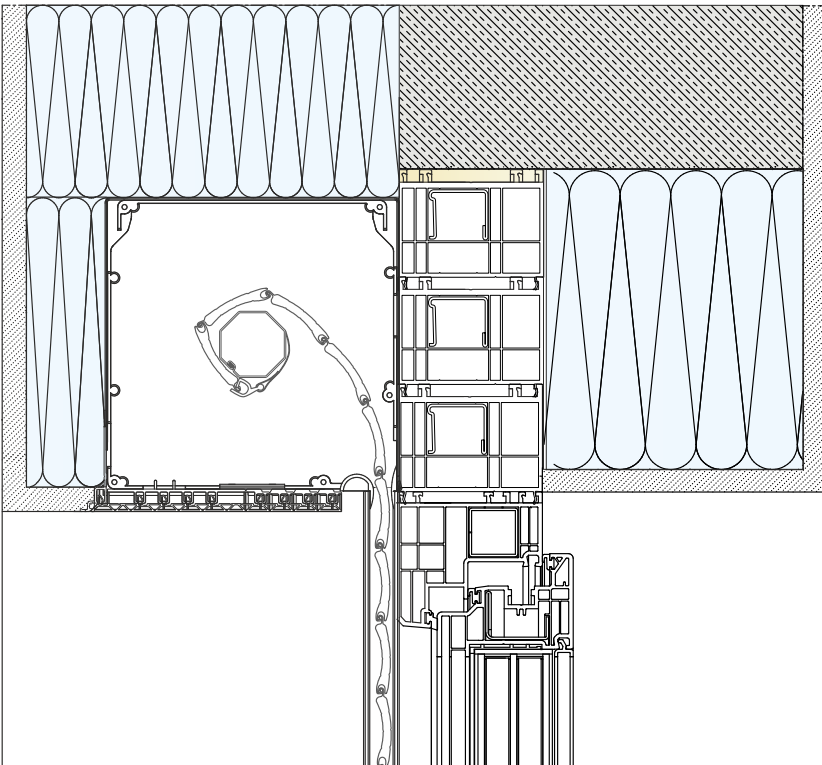
---

roller shutter box built in a standard lintel



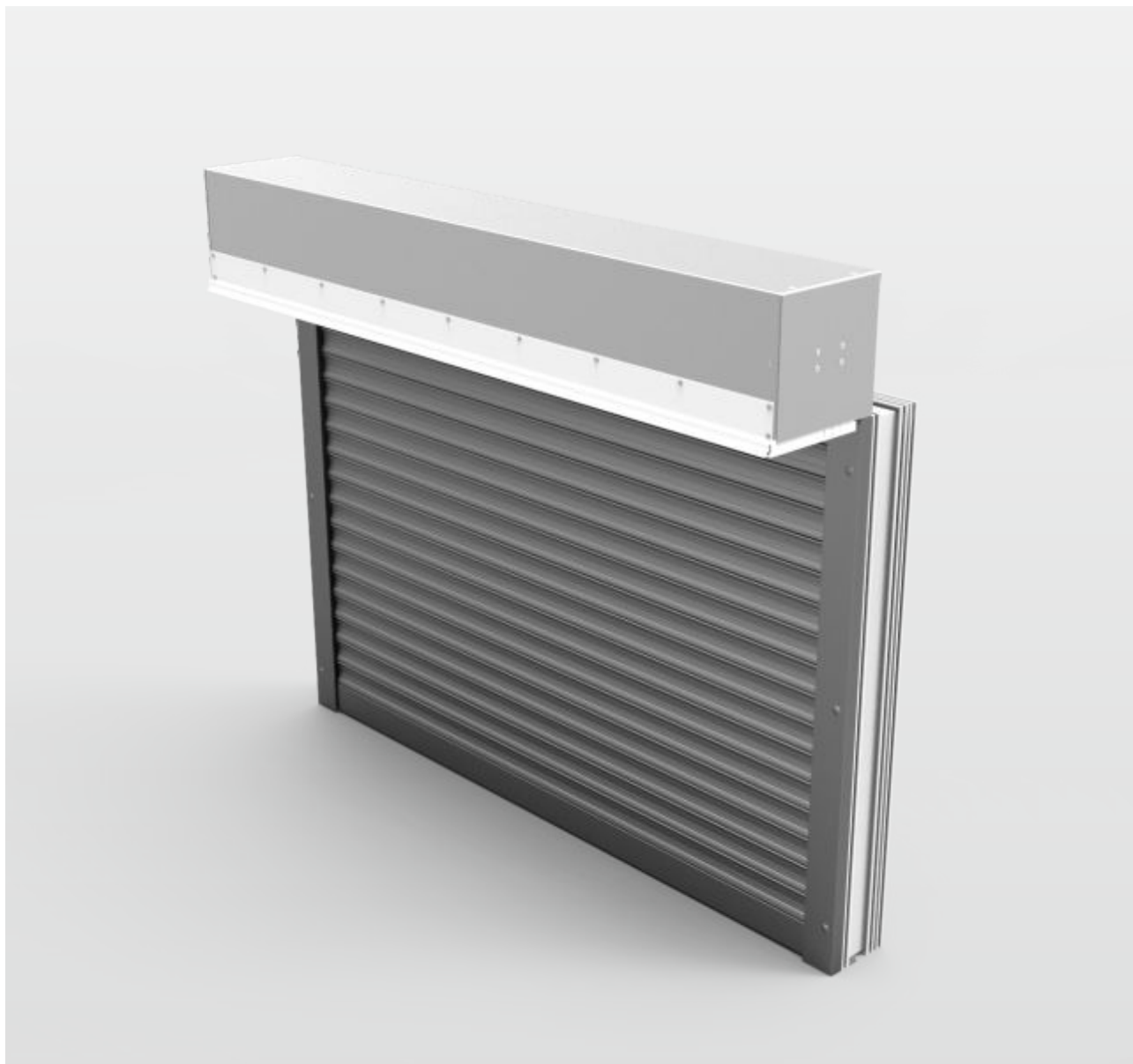
---

roller shutter box built in the L-shaped lintel



# Assembly stages

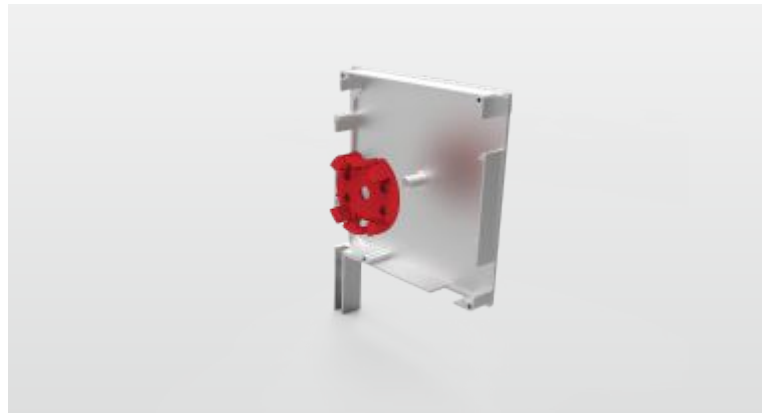
QuadBox hybrid



# 1.

## Assembly of the motor mount

a) Place the motor mount R OE M 40 in the QB AE 20 side wall.



b) Drill holes in the side wall with a  $\varnothing$  3.5 mm drill bit using the motor mount as a template.



c) Connect the mount with the side wall using rivets.

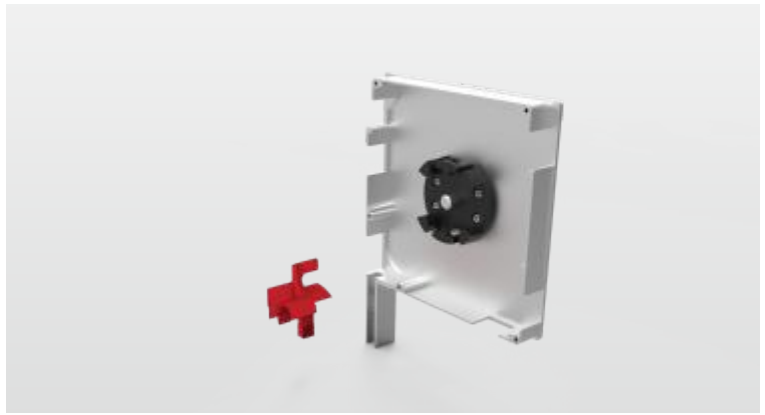


## 2.

### Terminal assembly

Place the QB AT 00 slide in the side wall of IB AE 20.

Repeat the operation for the second side wall.



## 3.

### Assembly of the top profile

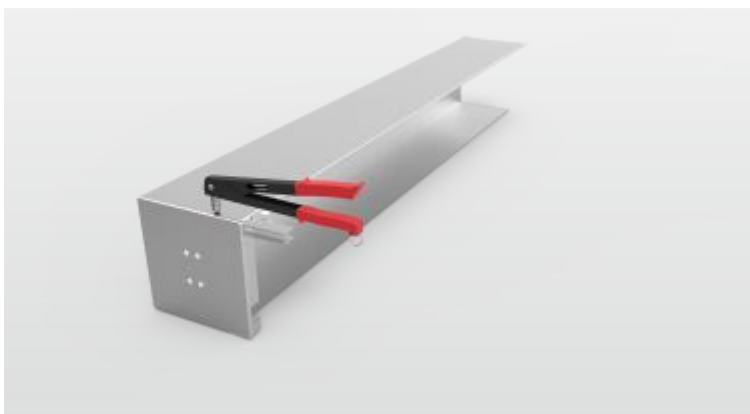
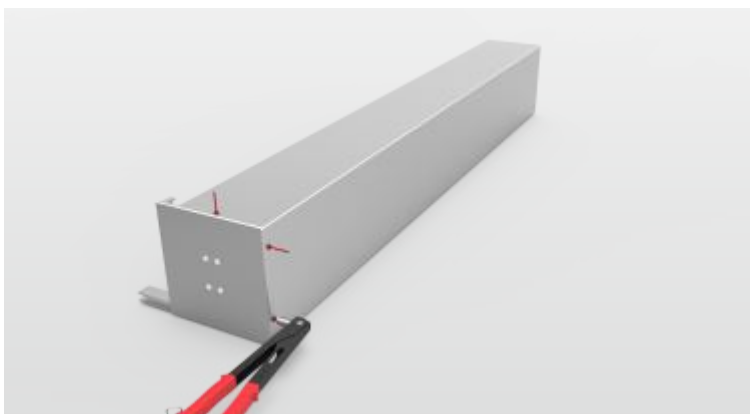
a) Set the side wall of QB AE and the top profile of the QB PT box.



b) Drill holes with a  $\varnothing$  4 mm drill bit.



c) Connect QB AE 20 and QB PT elements in the drilled spots with rivets.



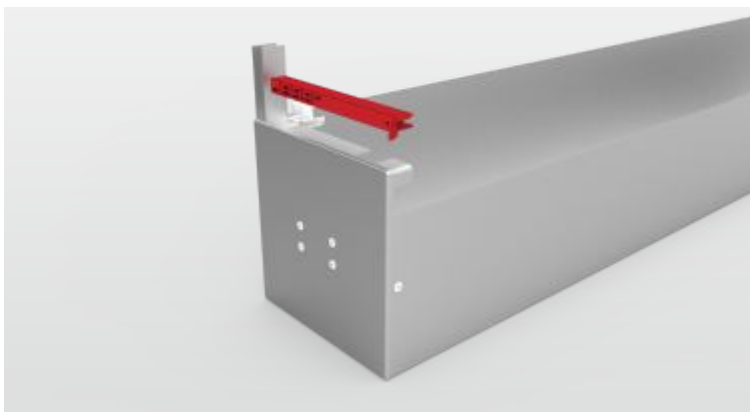
d) Repeat operations b) and c) for the other side wall.



#### 4.

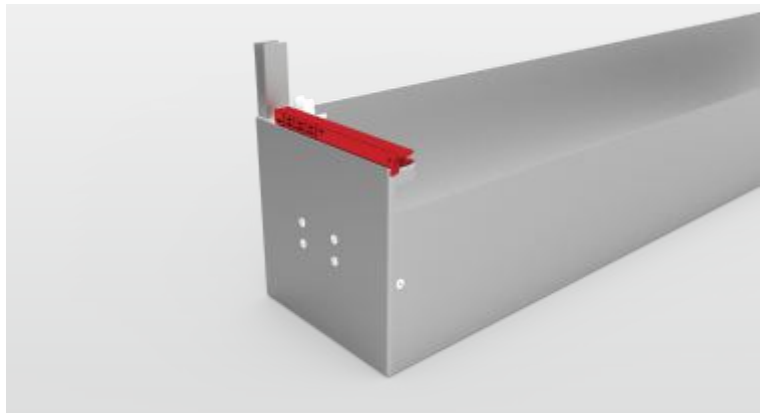
Assembly of the access plate cover

a) Place the QB AF mount in the QB AE side wall.

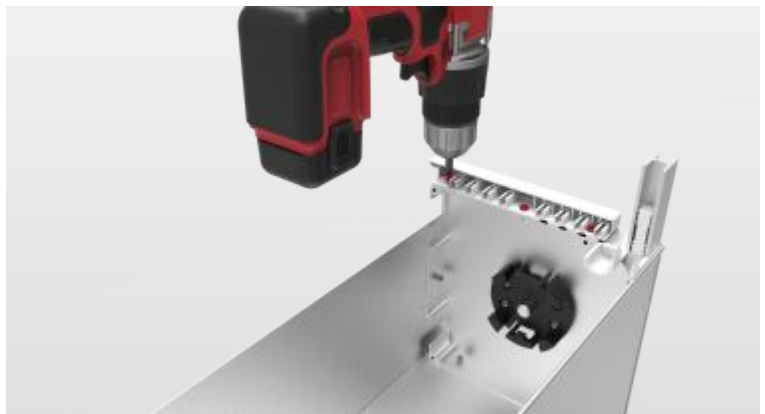




b) Push as far as possible in the directions shown in the drawing.



c) Fasten using AS 01 self drilling screws or rivets - fastening to the side wall in the places shown in the drawing.



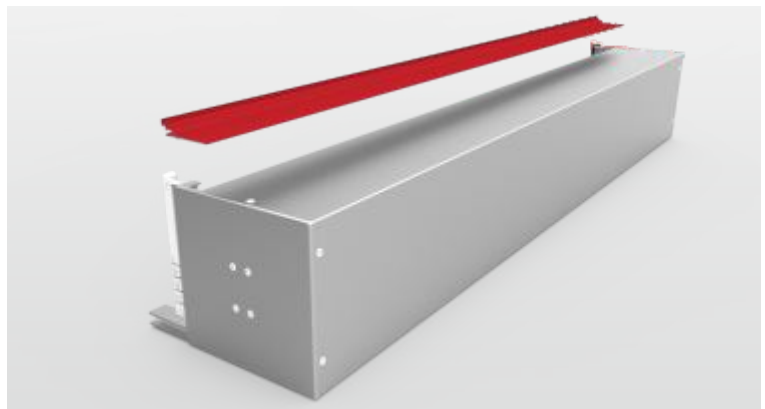
d) Repeat the operations for the opposite side of the box.

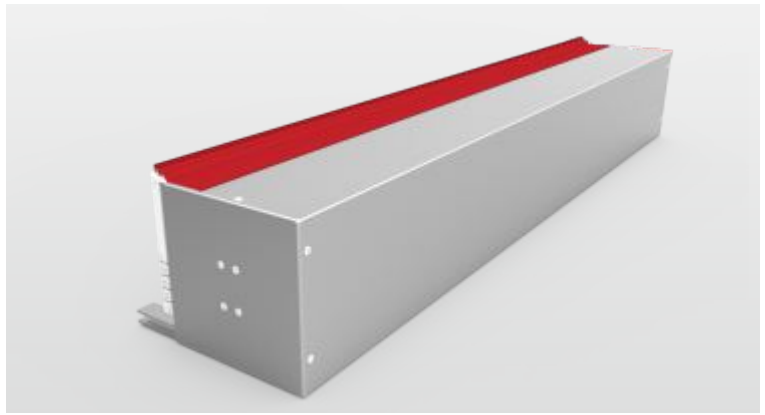


## 5.

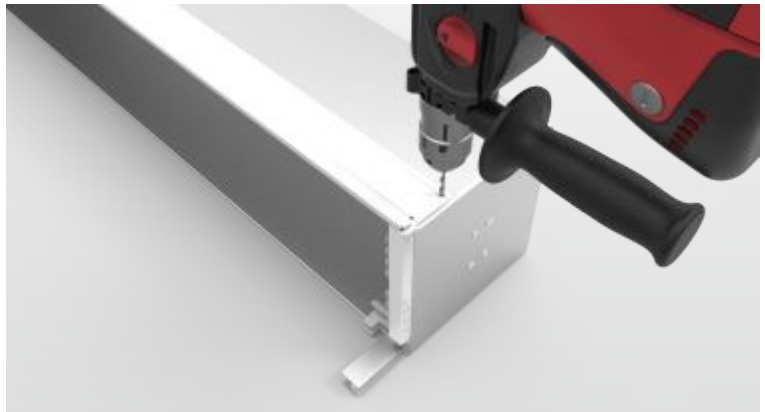
### Assembly of the bottom profile

a) Place the QB PB profile based on QB AF mounts, QB AE side walls and QB PT profile.

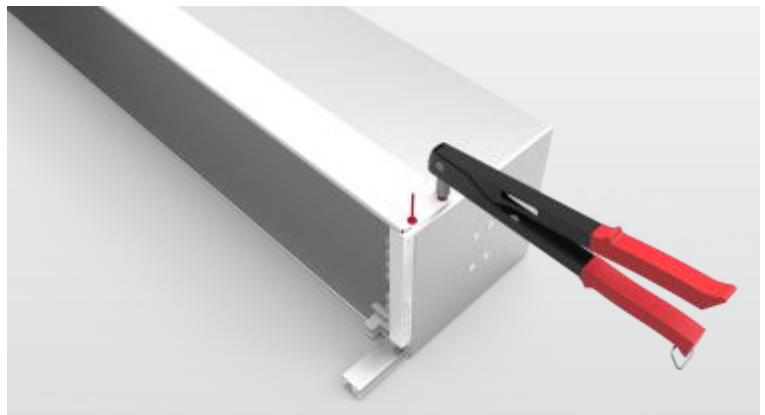


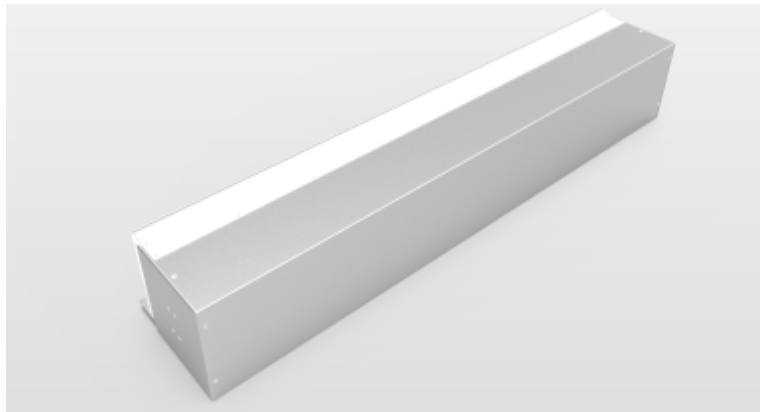
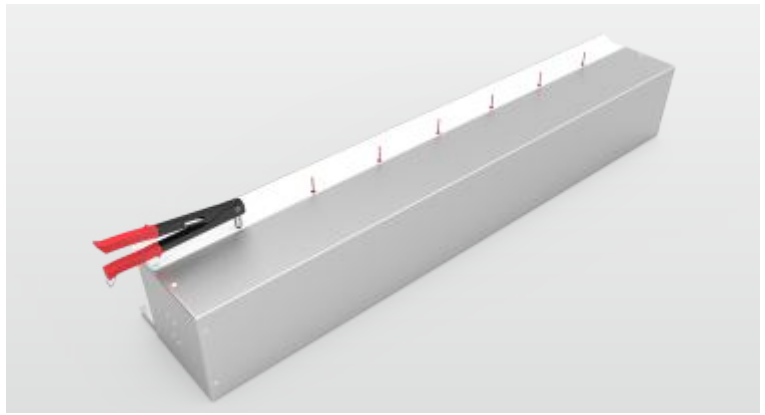


b) Drill holes with a  $\varnothing$  4 mm drill bit.



c) Connect the bottom profile to the AE side walls and the PT profile with rivets.

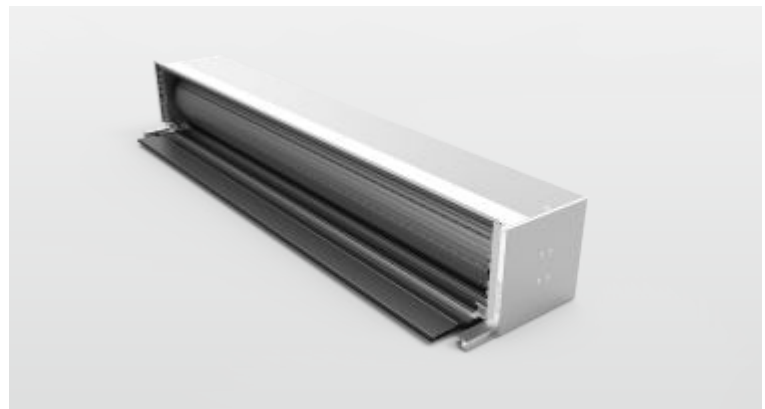
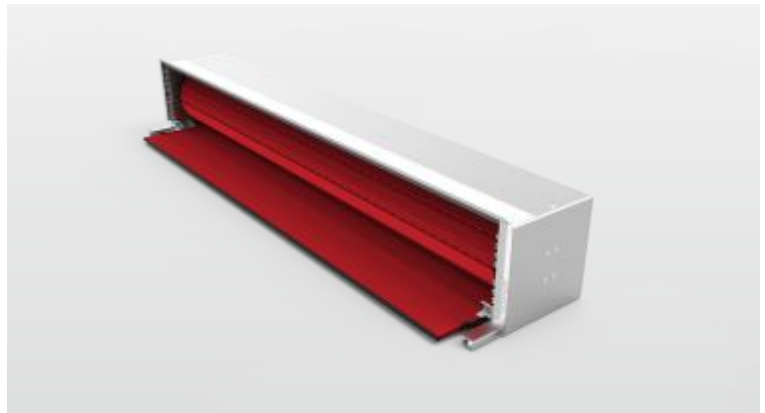




## 6.

### Assembly of the shutter curtain

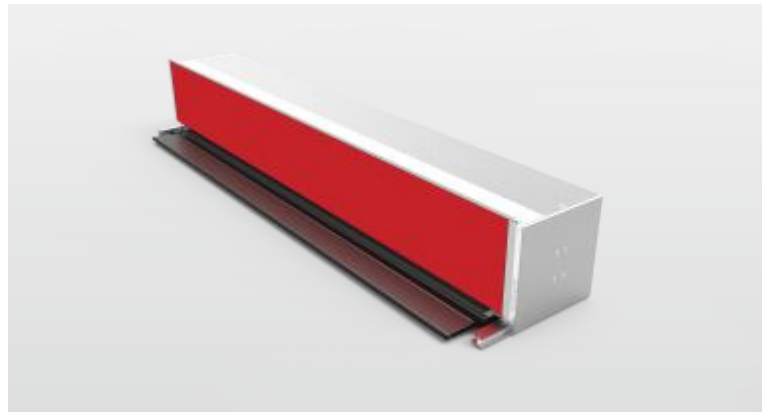
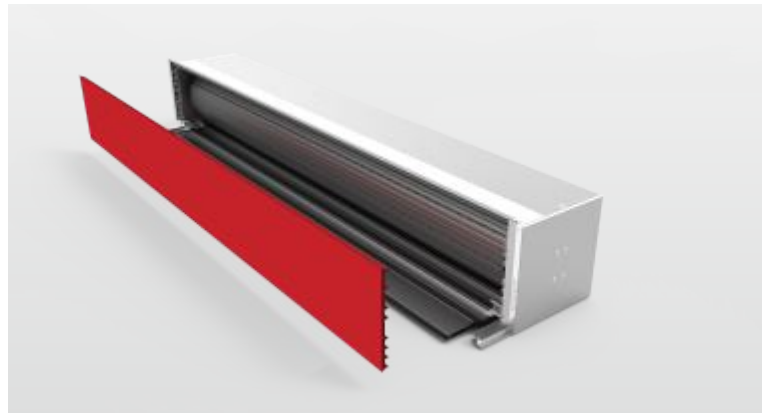
Place the previously prepared shutter curtain with the shaft and drive in the roller shutter box.



## 7.

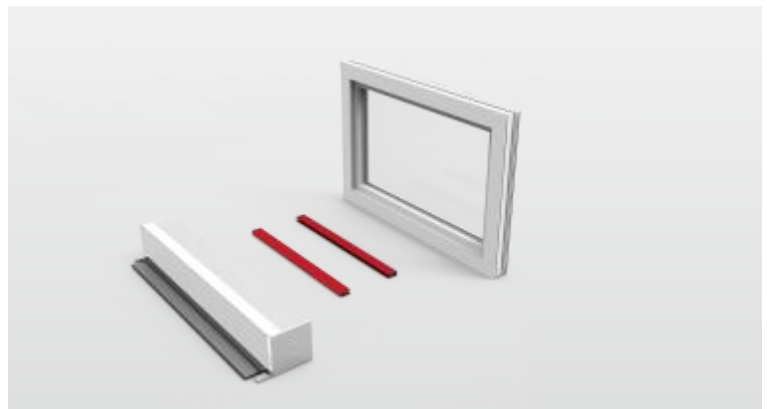
### Assembly of the access plate

Place the QB PA inspection cover in the box by clicking into the QB AF mount of the QB PB lower profile.



## 8.

### Installation of the guides on the window frame



a) In the QB PG shutter curtain guide drill through a hole using a  $\varnothing 6$  drill bit. The first hole - 70 – 90 mm from the top edge of the guide, next holes – up to 500 mm from the previous hole.



b) Deepen the holes made to the depth of the first wall of the guide (its thickness) with a  $\varnothing 10$  mm drill.



c) Fasten the guide to the window frame using a self-drilling screw.



d) Repeat the operation for the second guide



## 9.

Installation of the box on the window frame

a) Insert the QuadBoxBox into the guide profiles.

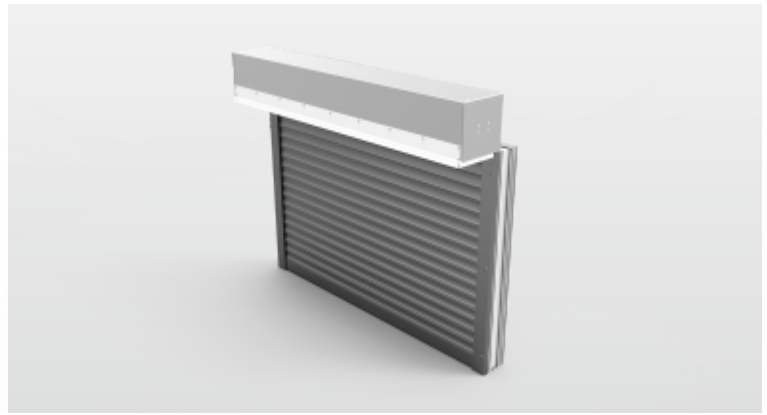


b) Fasten the box at the contact point (connection) of the side wall and the guide using the AS 01 screw.

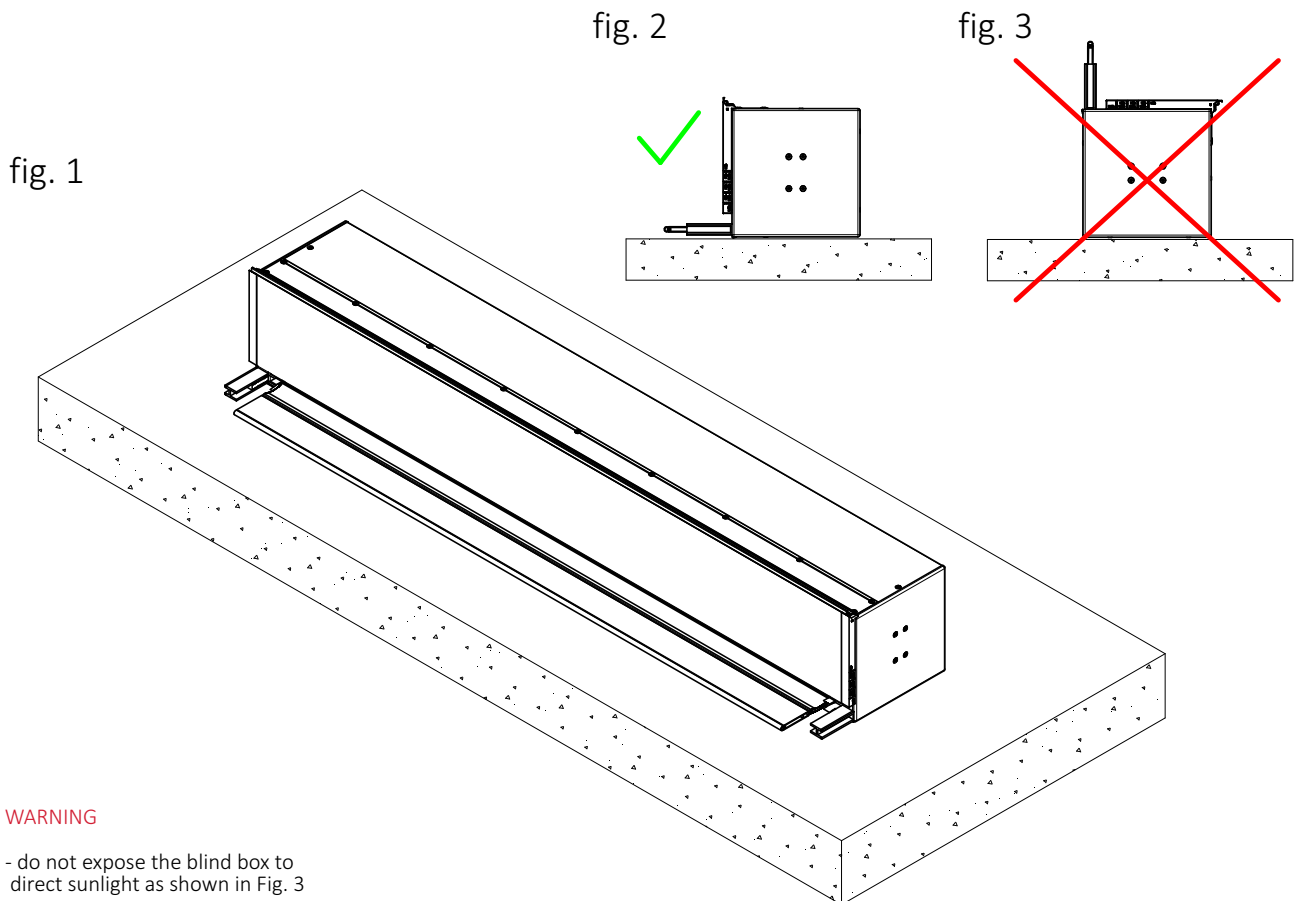
Repeat the operation for the opposite side.



## Finished product



## QBR hybrid box storage conditions



### WARNING

- do not expose the blind box to direct sunlight as shown in Fig. 3

- proper storage in places exposed to sunlight (Fig. 1 and Fig. 2)

BeClever Sp. z o.o.  
ul. Malinowa 1  
62-300 Września

T: +48 61 4360 354  
E: [info@beclever.eu](mailto:info@beclever.eu)

[beclever.eu](https://beclever.eu)